

Gas Pressure Controller

GPC SF-2 SF-4

Competitive, flexible and extremely versatile



Description

Cinpres UK limited SF range of gas controllers are offered with either 2 or 4 independently controlled gas circuits. Dual machine interfaces for either one or two molding machines to be run concurrently.

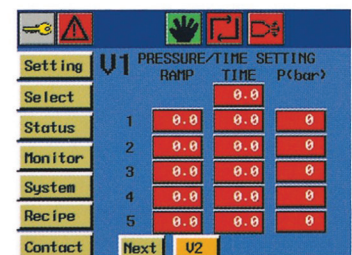
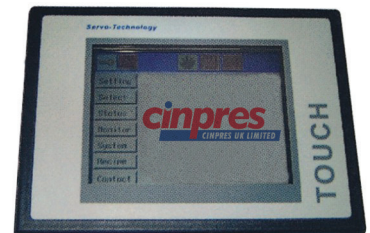
The SF controller offers a user friendly control and monitoring system with a 5.7 color STN LCD touch screen (320 x 240 pixels) mounted on a mobile console.

Pressure control valve modules can be mounted on the console or on the injection molding machine chassis or mold tool.

The SF controller uses advanced electro magnetic proportional control valves of German origin which are extremely robust and constructed for accurate and repeatable gas pressure delivery.

Features and Benefits

- **Easy to operate** and monitor the process from a mobile console with colour graphic displays of preset and actual pressures and times
- **Versatile** - one or two injection molding machines can be operated with a total of up to 4 independently controlled gas circuits
- **Competitive investment** for one or two gas injection molding machines
- **Flexible** - ideal for multi-machine production installations where centralised high pressure Nitrogen supply is available



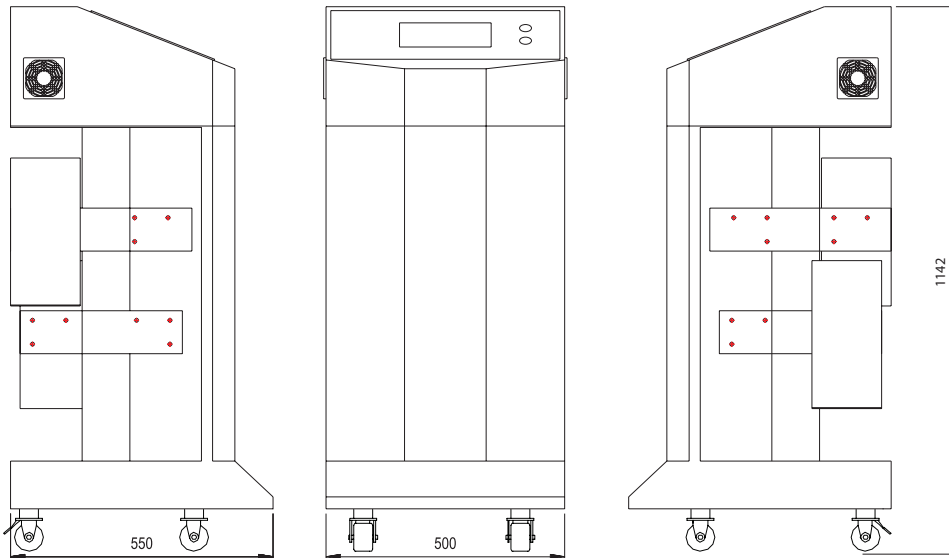
For details on our whole product range or to request a brochure, please visit our website: www.cinpres.com

Gas Pressure Controller

HPCOM T Series

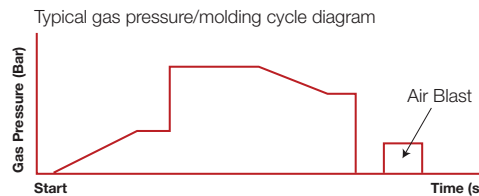
General Information

GPC SF



NET WEIGHT : 76-100 Kg (2 valves-4 valves)

Advanced electromagnetic proportional solenoid gas valves coupled with a user friendly control system enable the operator to have effective control over the gas molding process. Up to five Pressure Profiles can be set with individual control of ramp and gas hold times available. An 'Air Blast' program may be included to ensure gas pins remain free from blockages.



Specifications

Maximum working pressure: 350 bar

Mains power requirement: 220VAC(1P) +/- 10%, 50/60Hz

Power Consumption: 0.15 - 0.3 Kw

Gas Connections

Gas Inlet: 1/4" ISO standard parallel female

Gas Outlet: 1/4" ISO standard parallel female

Standard Connections Kits

GPC SF-2: 1/4" Flexible Hose-2M Length with connector (1pcs)
2mm ID Flexible Hose-6M Length with connector (2pcs)

GPC SF-4: 1/4" Flexible Hose-2M Length with connector (1pcs)
2mm ID Flexible Hose-6M Length with connector (4pcs)



Cinpres UK Limited, Unit 4, Meridian House, Road One, Winsford Industrial Estate,
Winsford, Cheshire, CW7 3QG, United Kingdom

Tel: +44 121 270 6857 Email: sales@cinpres.com Web: www.cinpres.com

Cinpres UK Limited reserves the right to change product specifications without prior notice